



PPHU
ADA OBRAZY

www.ada-obrazy.pl

05 - 800 Pruszków ul. Korczaka 15
tel. 22 798 99 11, fax 22 758 77 25
biuro@ada-obrazy.pl
www.ada-obrazy.pl

PPHU
ADA



BW R-4238 50x70
C-190 30x40

Ⓐ



BW R-4237 50x70
C-189 30x40

Ⓐ



BW L-111 50x100

Ⓐ



BW R-4215 50x70

Ⓐ



BW R-4216 50x70

Ⓐ



BW L-112 50x100

Ⓐ



BW R-4240 50x70
C-192 30x40

A



BW R-4239 50x70
C-191 30x40

A



BW R-4259 50x70

A



BW R-4260 50x70

A



BW R-4220 50x70
C-174 30x40

A



BW R-4219 50x70
C-173 30x40

A



BW R-4261 50x70 ^A
 MC-1292 40x50
 C-218 30x40



BW R-4262 50x70 ^A
 MC-1293 40x50
 C-219 30x40



BW GC-370 60x80 ^A
 MC-1296 40x50
 C-217 30x40



BW GC-369 60x80 ^A
 MC-1295 40x50
 C-216 30x40



BW GC-339 60x80
MC-1268 40x50 **A**



BW GC-340 60x80
MC-1269 40x50 **A**



BW GC-354 60x80
MC-1282 40x50 **A**



BW GC-353 60x80
MC-1281 40x50 **A**



BW L-114 100x50 **A**



BW J-135 33x95 ^A



BW J-136 33x95 ^A



BW J-112 33x95 ^A



BW J-111 33x95 ^A



BW J-106 33x95 ^A



BW J-107 33x95 ^A



BW GC-362 60x80
MC-1286 40x50

Ⓐ



BW GC-362 60x80
MC-1286 40x50

Ⓐ



BW GC-338 60x80
MC-1267 40x50

Ⓐ



BW GC-337 60x80
MC-1266 40x50

Ⓐ



BW K-214 70x70
A-471 30x30

Ⓐ



BW MC-1275 50x40 ^A



BW MC-1276 50x40 ^A



BW MC-1287 40x50 ^A



BW MC-1250 50x40 ^A



BW MC-1251 50x40 ^A



BW MC-1288 40x50 ^A



BW W-04152 40x50 ^A



BW W-04151 40x50 ^A



BW W-04150 40x50 ^A



BW K-201 70x70

A



BW K-202 70x70

A



BW A-446 30x30

A



BW A-447 30x30

A



BW A-469 30x30

A



BW A-468 30x30

A



BW A-470 30x30

A



BW A-549 30x30

A



BW K-242 70x70 **A**
A-561 30x30



BW K-241 70x70 **A**
A-562 30x30



BW K-238 70x70 **A**
A-551 30x30



BW K-239 70x70 **A**
A-552 30x30



BW L-113 100x50 **A**



BW C-236 30x40 **A**



BW C-238 30x40 **A**



BW C-237 30x40 **A**



BW W-06121 100x50 **A**



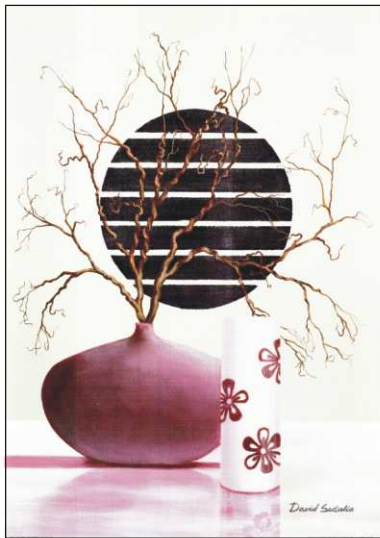
BW W-06125 100x50 **A**



BW J-141 95x33 **A**

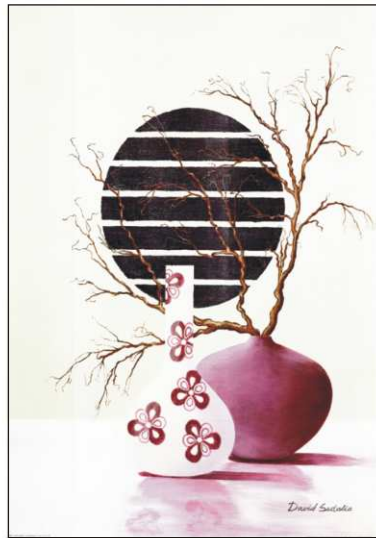


BW W-01031 95x33 **A**



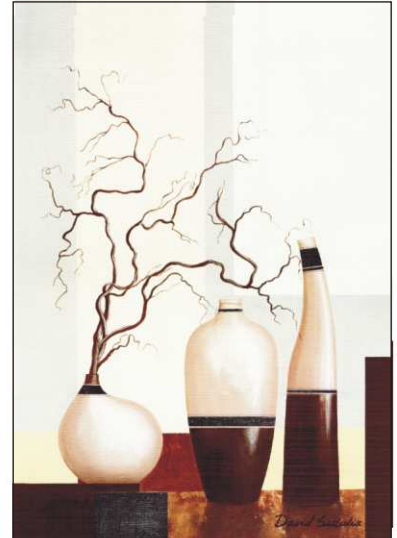
MY 85255 50x70
31195 30x40

A



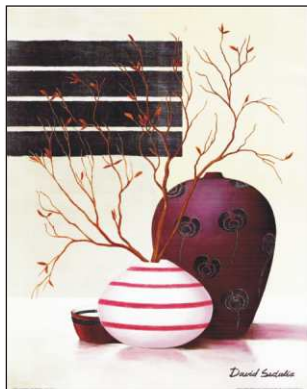
MY 85254 50x70
31194 30x40

A



MY 85252 50x70
31192 30x40

A



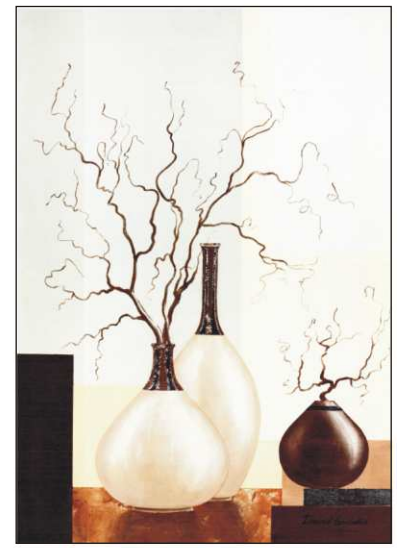
MY 49309 40x50

A



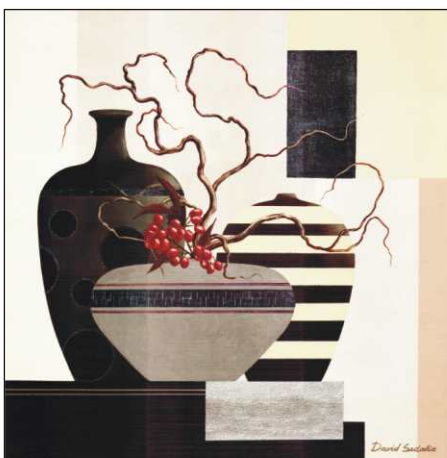
MY 49310 40x50

A



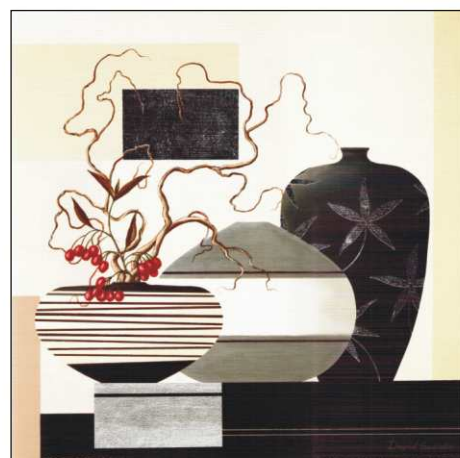
MY 85253 50x70
31193 30x40

A



MY 62172 60x60
99221 30x30

A



MY 62171 60x60
99220 30x30

A



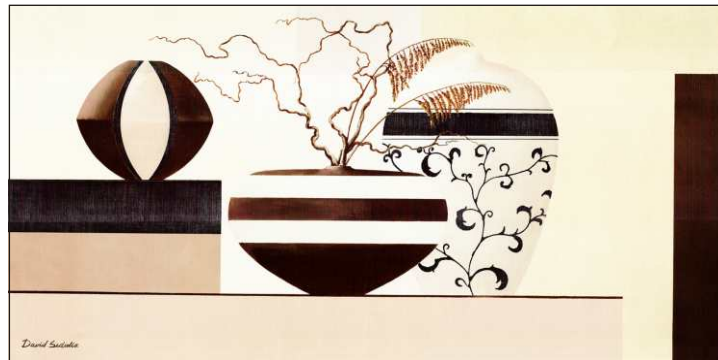
MY 87188 100x50

A



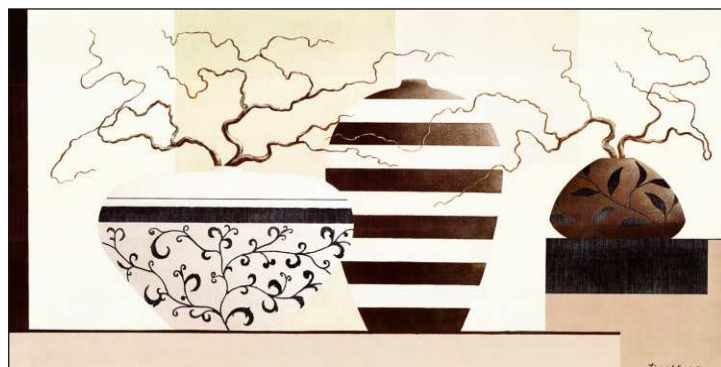
MY 87189 100x50

A



MY 87187 100x50

A



MY 87186 100x50

A



MY 87191 100x50 **A**



MY 87190 100x50 **A**



BW A-587 30x30 **A**



BW A-588 30x30 **A**



BW A-589 30x30 **A**



BW A-604 30x30 **A**



BW A-606 30x30 **A**



BW A-605 30x30 **A**



BW A-618 30x30 **A**



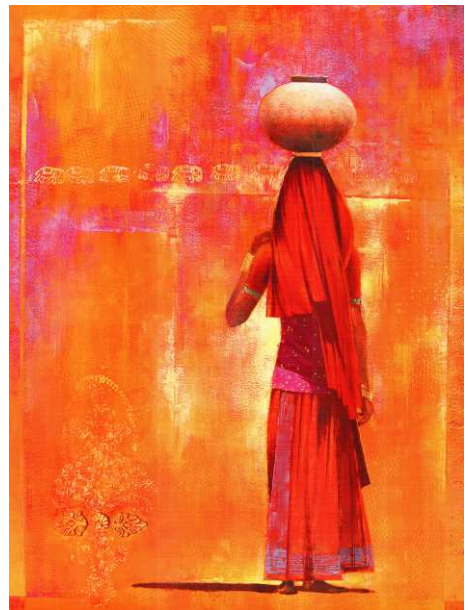
BW A-617 30x30 **A**



BW A-619 30x30 **A**



BW W-08239 60x80 ^A



BW W-08240 60x80 ^A



BW W-04352 40x50 ^A



BW W-04353 40x50 ^A



BW W-04543 40x50 ^A



BW W-04544 40x50 ^A



MARK SPAIN | Long Beach

BW W-800632 80x60

A



MARK SPAIN | Promenade I

BW W-800554 60x80

A



BW W-401099 50x40

A



BW W-401051 50x40

A



BW W-401103 40x50

A



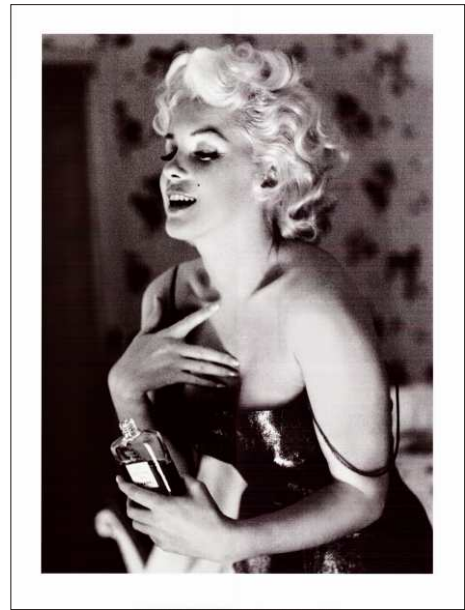
BW W-401104 40x50

A



BW W-08047 60x80
W-04350 40x50

A



BW W-08046 60x80
W-04349 40x50

A



BW W-08110 60x80

A



BW W-08296 60x80

A



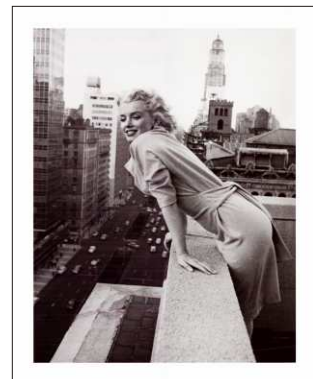
BW W-05166 50x50

A



BW W-04550 50x40

A



BW W-04351 40x50

A



MY 7153 70x70

A



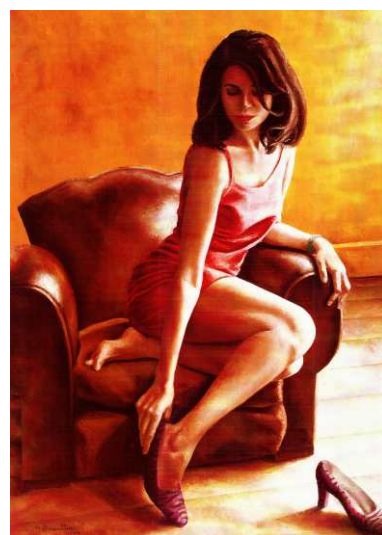
MY 7154 70x70

A



BW W-06124 50x100

A



BW R-4129 50x70

A



BW R-4131 50x70

A



MY 85260 70x50

A



MY 85261 70x50

A



BW W-08599 80x60

A



BW W-08584 80x60

A



RU ZD 01 100x50

A



BW L-083 100x50

A



BW L-082 100x50

A



BW W-500211 100x50

A



BW W-500212 100x50

A



BW W-06122 100x50

A



GX **B**
GOGV 13371 30X90



GX **B**
GOGV 13372 30X90



RU ZD 118 100x50 **A**



RU ZD 126 100x50 **A**



GX **B**
GOGV 13344 30X90



GX **B**
GOGV 13345 30X90



RU ZD 122 100x50 **A**



RU ZD 73 100x50 **A**



GX **B**
GOGU 10511 71X56



RU ZD 125 100x50 **A**



RU ZD 121 100x50

A



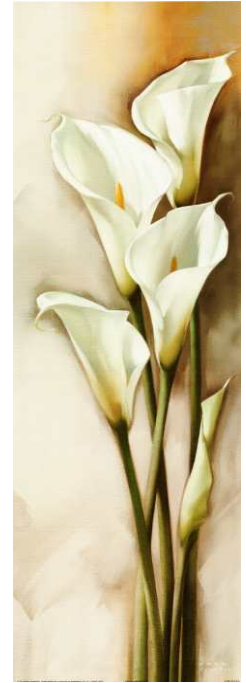
RU ZD 29 100x50

A



GX GOGV 13430 30X90

B



GX GOGV 13431 30X90

B



GX GOGY 13473 90x60

B



GX GOGV 10695 30x90

B



GX GOGV 10696 30x90

B



GX GOGY 13474 90X60

B



GX GOGY 10829 60X90 **B**



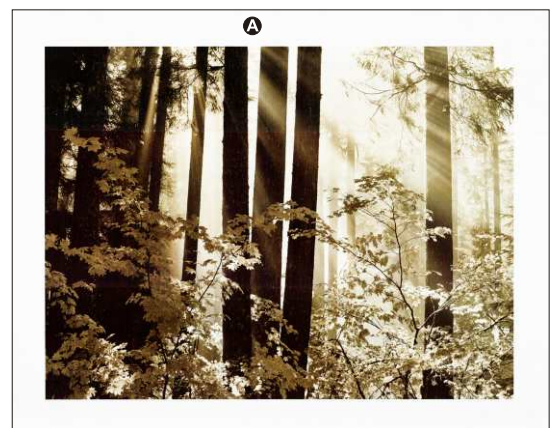
GX GOGY 10828 60X90 **B**



RU ZD 123 100x50



GX TCU 20522 71X56 **B**



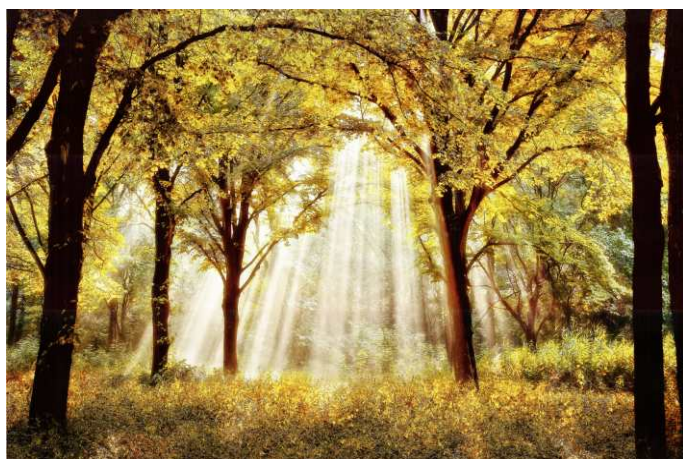
GX TCU 20525 71X56 **B**



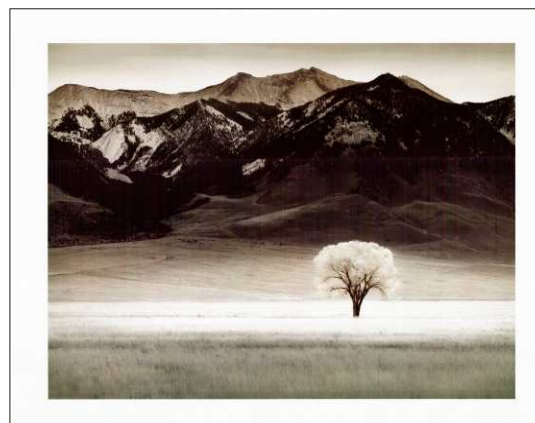
GX GOGU 13911 71X56 **®**



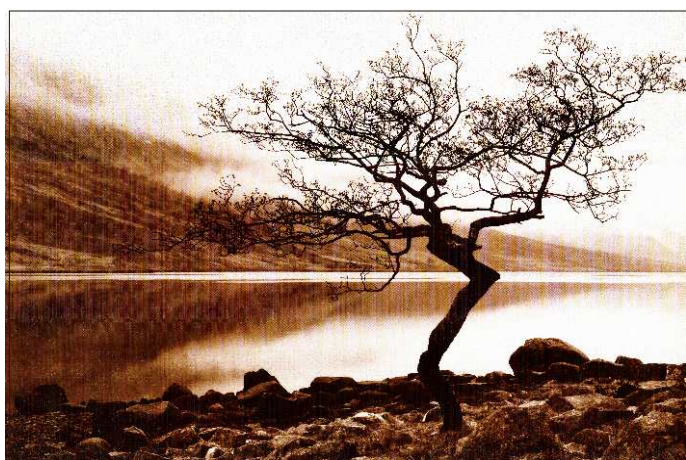
GX GOGY 13690 90X60 **®**



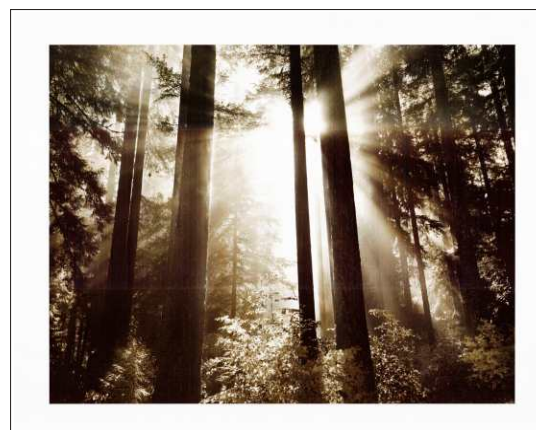
GX GOGX 14452 90X60 **®**



GX TCU 20523 71X56 **®**



GX GOGP 13429 90X60 **®**



GX TCU 20524 71X56 **®**



GX GOGH 13927 40X50 [®]



GX GOGH 13928 40X50 [®]



GX GOGY 10698 90x60 [®]



GX GOGY 10697 90x60 [®]



GX GOGY 13589 90x60 [®]



GX GOGY 13588 90x60 [®]



MY *Sunset* Helmut Glass
87184 100x60, 49250 50x40, 31097 40x30

A



MY *Silent Waters* Helmut Glass
87183 100x60, 89105 80x50, 49249 50x40, 31096 40x30

A



MY *Distant View* Helmut Glass
87182 100x60, 49248 50x40, 31095 40x30

A



MY *Mountain Path* Helmut Glass
87181 100x60, 49247 50x40, 31094 40x30

A



MY *Marshlands* H. Buchner
8772 100x60, 3146 40x30

A



MY *Monastery near Kazan* Helmut Glass
87178 100x60, 89097 80x50, 49229 50x40, 31074 40x30

A



MY *Winter in Samara* Helmut Glass
87177 100x60, 89096 80x50, 31073 40x30

A



MY *Overlooking the River* Igor Priscepa
87035 100x60, 89071 80x50, 31011 40x30

A



SH BL 1752 100x70

A



MY Autumn Way II Igor Priscepa
87037 100x60, 89073 80x50, 49144 50x40, 31013 40x30

A



BS Russian Landscapes VI Igor Priscepa
B1.61.06 100x60, B1.57.06 70x50

A



MY Overlooking the See Igor Priscepa
87049 100x60, 89080 80x50, 49164 50x40, 31021 40x30

A



MY Russian River Valley Slava
8783 100x60, 89022 80x50, 49056 50x40

A



MY Slow River III Igor Priscepa
87051 100x60, 31023 40x30

A



MY Summer Way Igor Priscepa
87052 100x60, 89083 80x50, 1024 40x30

A



MY Russian Landscapes I Ilfat Davutov
B1.61.01 100x60, B1.57.01 70x50

A



MY Siberian Lake Helmut Glassl
8763 100x60, 89001 80x50, 5311 70x33, 49001 50x40,
3122 40x30

A



MY Silent Stream Slava
8784 100x60, 89023 80x50, 49057 50x40

A



BS Russian Landscapes IV Ilfat Davutov
B1.61.04 100x60, B1.57.04 70x50

A



MY Birch Grove near Pokrovskoje Osipov
2220 140x90, 8791 100x60, 5304 70x33, 3191 40x30

A



MY River Bend Slava
8787 100x60, 49060 50x40

A



MY Birches at the lake I Helmut Glassl
87080 100x60, 49284 50x40, 31154 40x30

A



MY Lake Slava
8795 100x60, 89036 80x50, 3174 40x30

A



MY River with Swans II Slava
8797 100x60, 3176 40x30

A



MY Old Mill Cottage Helmut Glassl
87008 100x60, 5305 70x33, 3189 40x30



MY Cottage at the Lake Helmut Glassl
87009 100x60, 49109 50x40



MY Bridge into Paradise Helmut Glassl
87025 100x60, 89065 80x50, 31007 40x30



MY Springtime Morning Helmut Glassl
87011 100x60, 89051 80x50, 49111 50x40



MY Romantic Pathway Helmut Glassl
87023 100x60, 89063 80x50, 49133 50x40, 31005 40x30



MY Reflections of Spring Helmut Glassl
87024 100x60, 49134 50x40, 31006 40x30



MY All Alone H. Buchner
8764 100x60, 89002 80x50, 5306 70x33, 3123 40x30



MY Summer Glow H. Buchner
8766 100x60, 89004 80x50, 49004 50x40, 3125 40x30





MY Sunny Afternoon H. Buchner
8768 100x60, 89006 80x50, 49006 50x40, 3131 40x30 **A**



MY A River Landscape H. Buchner
2219 140x90, 8767 100x60, 5307 70x33, 89005 80x50,
49005 50x40, 3130 40x30 **A**



MY Old Mill H. Buchner
2218 140x90, 8771 100x60, 5303 70x33,
49026 50x40, 3145 40x30 **A**



MY Quiet Pond H. Buchner
8765 100x60, 89003 80x50, 49003 50x40, 3124 40x30 **A**



MY Brook in the Mountains Helmut Glassl
8712 100x60, 4468 40x30 **A**



PG Jezero. Zachód słońca M. Lorens
831 60x100, 731 50x100, 654 50x70, 435 30x40 **A**



MY Lake District Helmut Glassl
8776 100x60, 5309 70x33, 49031 50x40, 3150 40x30 **A**



MY Tundra Night Helmut Glassl
87058 100x60 **A**



SH XL 182 100x50, DN 419 33x70



SH XL 183 100x50, DN 420 33x70



WL 50148 100x50



WL 50141 100x50



SH D-23 33x70



SH D-24 33x70



MY Stone Bridge Helmut Glassl
5312 70x33,



MY High Mountain Lake Helmut Glassl
89014 80x50, 49030 50x40, 3149 40x30



MY Mill at the River Helmut Glassl
89086 80x50, 49184 50x40




MY Autumn Way III Igor Priscepa
89081 80x50, 49165 50x40, 31022 40x30





MY *Secret Pond* Helmut Glassl 
4956 50x40, 3041 40x30



MY *Away from it All* Helmut Glassl 
4957 50x40, 3042 40x30




MY *Josephs Favourite I* 
Helmut Glassl
49035 40x50, 3153 30x40




MY *Wilderness Wonder* Slava 
49058 50x40



MY *Autumn Way I* Igor Priscepa 
49143 50x40, 31012 40x30



MY *Josephs Favourite II* 
Helmut Glassl
49036 40x50, 3154 30x40




MY *Waterfall I* Ada / Kris 
4982 50x40, 3078 40x30




MY *Birches in Springtime* 
H. Buchner
3060 40x30, 3300 50x20



PG *Stary Mlyn. Lato* 
Zygmunt Konarski
4029 40x30



MY *Monastery near Kaliningrad* 
Helmut Glassl
31075 40x30



MY *Untouched Nature* 
Igor Priscepa
31025 30x40



PG Sosny Cezary Różycki
809 60x100, 709 50x100, 609 50x70, 517 40x50,
408 30x40 A



PG Wiatrak Cezary Różycki
603 70x50 A



PG Stary Młyn Cezary Różycki
808 100x60, 708 100x50, 600 70x50, 512 50x40,
402 40x30 A



PG Pejzaż morski z latarnią Cezary Różycki
804 100x60 A



PG Brzozy Cezary Różycki
803 100x60, 703 100x50, 604 70x50, 514 50x40,
403 40x30 A



PG Moczary. Zachód słońca Cezary Różycki
802 100x60, 702 100x50, 401 40x30 A



PG Wierzy nad potokiem Cezary Różycki
801 100x60, 701 100x50 A



PG Pejzaż z Roztocza Krzysztof Brocki
800 100x60, 700 100x50, 605 70x50, 501 50x40,
404 40x30 A



W/L 35116 100x35



W/L 35148 100x35



W/L 5850 80x50



W/L 5871 80x50



W/L 5812 80x50



W/L 5887 80x50



W/L 50147 100x50



MY Otmochow Lake
H. Buchner
3144 40x30



MY Slow River I Igor Priscepa
31014 40x30



MY Waterfall in the Carpathian
Helmut Glassl
3076 40x30



MY Waterfall I Ada / Kris
3077 40x30





WL *Mountain lake* Jch. Bochmann
3565 100x35



WL *Ramsau near Berchtesgaden* H. Bachmann
568 80x40



SJ *Johan de Jong*
SJ 7017 70x35





WL *Brook with mill* Gotthardt
35162 100x35



WL *Cottage in the Zillertal* H. Bachmann
564 80x40



WL *Wild Water* Russell May
4899 80x40





WL *Hart at a lake* Kuboth
35149 100x35

A



WL *Calm mountain lake* Türk
50102 100x50

A



WL 001 100x40

A



WL

002 80x40

A



WL

003 100x35

A



WL Cottage in the high montagnes Gotthardt
50108 100x50

A



WL 60004 100x60, 80894 80x50

Ⓐ



WL 60005 100x60, 80895 80x50

Ⓐ



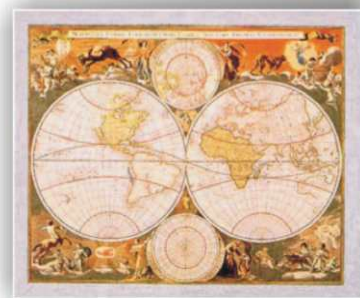
SH g.al. 78 silver 50x40

Ⓐ



SH g.al. 80 silver 50x40

Ⓐ



SH g.al. 82 silver 50x40

Ⓐ



PG *Sakiewka (Żyd)* Marian Kaszuba
523 40x50, 410 30x40, 007 24x30, 336 18x24,
248 13x18

Ⓐ



PG *Żyd III* Marian Kaszuba
428 30x40, 012 24x30, 354 18x24,
2030 13x18

Ⓐ



PG *Żyd z cytryna* Marian Kaszuba
437 30x40 365 18x24, 2051 13x18,

Ⓐ



IG *La morte del canarino* Anonimo
SN 272 50x70, 50x40, 30x40



IG *Ragazza che legge* J. H. Fragonard
SN 370 50x70, 50x40, 30x40



IG *Luccellino morto* J. B. Greuze
SN 393 50x70, 40x50, 30x40



IG *La Gioconda* Leonardo da Vinci
SN 305 50x70, 50x40, 30x40



IG *Dama z łasiczką* Leonardo da Vinci
602 70x50, 506 50x40, 409 30x40,
005 24x30, 317 18x24, 224 18x13



IG *Ritratto di Madame Rimski-Korsakow*
F. Winterhalter SN 191 50x70, 50x40, 40x30



IG *Autoritratto con la figlia*
M. A. E. Vigee Lebrun
SN 238 50x70, 40x50, 30x40



IG *Ragazza che legge*
G. Raoux
SN 243 50x70, 40x50, 30x40



IG *Ragazzina con fiori*
G. Madonini
SN 459 50x70, 50x40, 30x40



IG **Lo scolaretto** **A**
F. H. Drouais
SN 416 50x70, 40x50, 30x40



IG **Ritratto di Bambino** **A**
J. B. Greuze
SN 217 50x70, 40x50, 30x40



IG **Ragazzo biondo** **A**
J. B. Greuze
SN 336 50x70, 40x50, 30x40



IG **Ritratto di Master Lambton** **A**
T. Lawrence
SN 290 40x50, 30x40



IG **Master Simpson** **A. W. Devis** **A**
SN 353 40x50, 30x40



IG **Le Printemps** **A. P. Cot** **A**
OM 1040 50x70, 40x50, 30x40



IG **Lorage** **A. P. Cot** **A**
OM 1041 50x70, 40x50, 30x40



IG **Ragazzo che piange** **A**
C. Parisi
SN 8244 50x70, 40x50, 30x40



IG **Bimba che piange** **A**
C. Parisi
SN 8245 50x70, 40x50, 30x40



IG **Ragazzino che piange** **A**
C. Parisi
SN 633 50x70, 40x50, 30x40



IG **Ragazzina che piange** **A**
C. Parisi
SN 634 50x70, 40x50, 30x40



MY Gethsemane Winner
8650 100x50, 5118 78x36, 5218 70x33

A



MY Der Gute Hirt Giovanni
8652 100x50, 5089 78x36

A



MY Heiliges Abendmahl Zabateri
8653 100x50, 5088 78x36

A



MY Christus im Ährenfeld Giovanni
8659 100x50, 5290 70x33

A



MY Heilige Familie Giovanni
8668 100x50

A



MY Heilige Familie Giovanni
8699 100x50, 5299 70x33

A



MY Heilige Familie Giovanni
8657 100x50

A



MY Engel-Madonna I Giovanni
8669 100x50

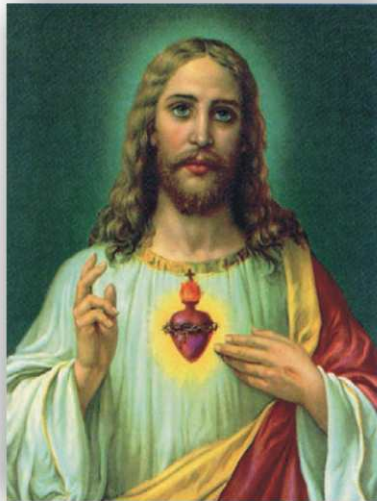
A



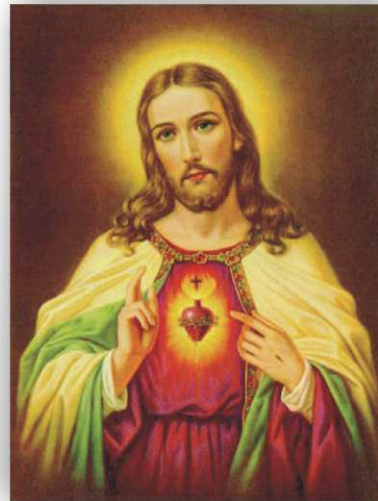
MY *Nahrung Christi*
10034 30x40 **A**



MY *Hi. Herz Mariae*
12875 40x50, 10875 30x40 **A**



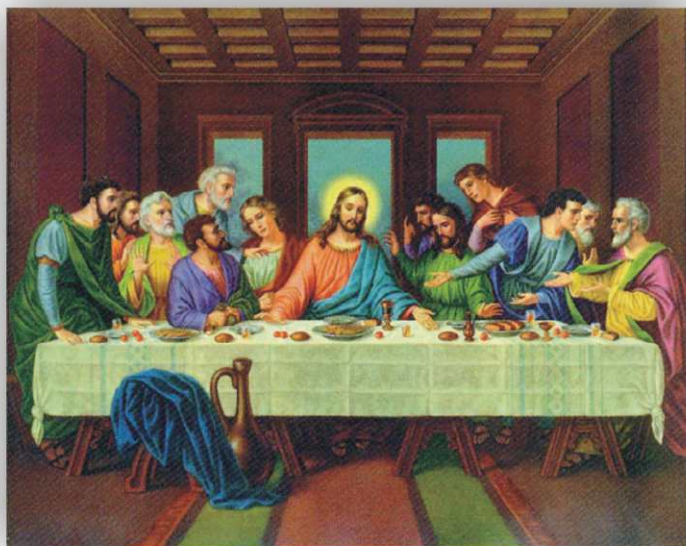
MY *Hi. Herz Jesu*
56017 40x50, 55017 30x40 **A**



MY *Hi. Herz Jesu*
12876 40x50, 10876 30x40 **A**



PG *Matka Boska Marian Kaszuba*
657 50x70, 436 30x40,
359 18x24, 2045 13x18 **A**



MY *Heiliges Abendmahl*
12366 50x40, 10366 40x30 **A**



IG Raff aello Sanzio
SO 70836 70x50, 50x35, 35x25

A



IG *The First Kiss* W. Bouguereau
SO 70989 70x50, 50x30, 35x25

A



IG *Imperatrice Eugenia e le sue dame* F. Winterhalter
SN 223 50x70, 40x50, 30x40

A



PG *Dama w liliowej sukni* Władysław Czachórski
516 50x40, 233 18x13

A



TA *Star* Will Richmond
WR 6471 50x100

B



TA *Diva* Will Richmond
WR 6470 50x100

B



TA ERO 6626 60x80

B



TA ERO 6627 60x80

B



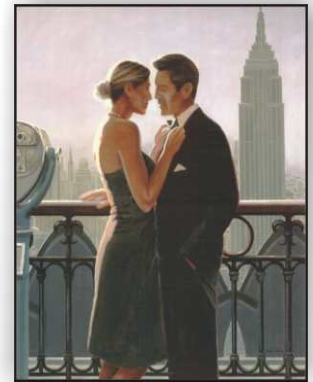
AM Studio Waltz Myles Sullivan
A 6372 50x50

B



AM Studio Tango Myles Sullivan
A 6372 50x50

B



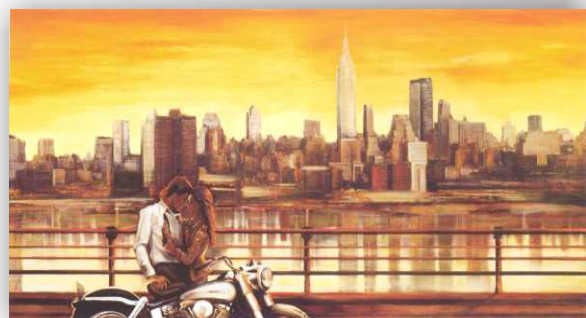
AM International Rendezvous
A 8216 40x50

B



TA ERO 6625 100x50

B



TA ERO 6624 100x50

B



TA

GMA 6613 138x48

B



TA

EC 6605 138x48

B



TA

GMA 6614 138x48

B



TA

EC 6612 100x50

B



SH *Follin 71 67x47*

A



SH *Follin 75 67x47*

A



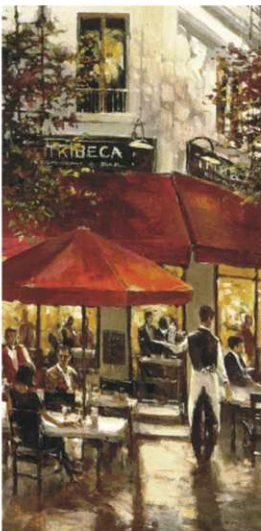
SH *Follin 74 67x47*

A



SH *Follin 78 67x47*

A



AM *Tribeca Bar*
Brent Heighton
A 4227 40x80

E



AM *5th Ave Cafe*
A 4226 40x80

E



AM *Piano Jazz*
A 4474 60x80

E



AM *New York State of Mind* Brent Lynch
A 6560 80x60

Ⓔ



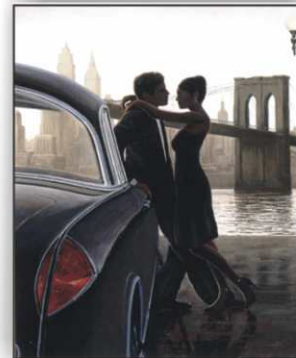
AM *Pensive New York* Brent Lynch
A 6561 80x60

Ⓔ



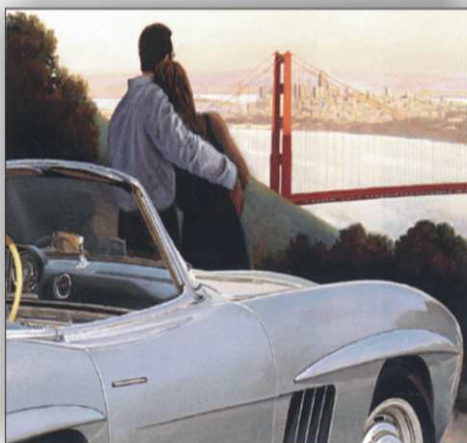
AM *Evening Nostalgia* Myles Sullivan
A 6598 70x50

Ⓔ



AM *Urban Moments*
Myles Sullivan
A 6276 40x50

Ⓔ



AM *Nostalgic View* Myles Sullivan
A 6599 50x70

Ⓔ



TA *Letting Go* Jeff White
JEW 6025 80x60, JEW 6024 120x90

Ⓔ



BS Violet Anonymous
B2.51.01 100x50

A



BS Rosemary Vincent
B2.51.15 100x50

A



SH 254 56x71

A



TI 61 100x50

A



SH 263 56x71

A



TI 62 100x50

A



TI EBN 2020 50x70

A



TI EBN 2041 50x70

A



WL 35112 100x35

A



WL Girl with heron Mike Gordon
50128 100x50

A



SH

XL 166 100x50

A



SH

XL 167 100x50

A



SH

XL 56 100x50, DN 28 70x33

A



SH

XL 137 100x50, DN 246 70x33

A



SH

E 11 69x49, R 19 45x35

A



SH

E 12 69x49, R 20 45x35

A



PG *Babie Lato* Józef Chełmoński
6021 70x50, 508 50x40, 200 18x13 **A**



PG *Bociany* Józef Chełmoński
628 70x50, 432 40x30, 004 30x24, 309 24x18,
509 50x40, 201 18x13 **A**



PG *Jesień. Dym* Józef Chełmoński
503 50x40, 205 18x13 **A**



PG *Kurka wodna* Józef Chełmoński
505 50x40, 206 18x13 **A**



PG *Pastuszek* Józef Chełmoński
511 50x40, 313 24x18, 208 18x13 **A**



PG *Dziewczyna z dzbanem* Apoloniusz Kędziński
316 24x18, 507 50x40, 213 18x13 **A**



PG *Stańczyk* Jan Matejko
502 50x40, 318 24x18, 216 18x13 **A**



PG *Karczma "Ostatni grosz"* Jan Feliks Piwarski
500 50x40, 230 18x13, 101 15x10 **A**



PG Rybacy Leon Wyczółkowski
504 50x40, 221 18x13

A



PG Jastrząb. Pogoda Józef Chełmoński
530 50x40, 310 24x18, 204 18x13

A



PG Ule na Ukrainie Jan Stanisławski
412 40x30, 273 18x13

A



IG M. Ruiz
SO 70545 70x50, 50x35, 35x25

A



PG Trójka Marian Kaszuba
643 70x50, 392 24x18, 2007 18x13

A



PG Zaatakowani przez wilki Marian Kaszuba
813 100x60, 713 100x50, 637 70x50, 327 24x18, 242 18x13

A



PG Konie I Marian Kaszuba
648 70x50

A



IG S. Santos
SO 71220 70x50, 50x35, 35x25

A



MY *Morning in a pine wood* Ivan Shishkin
87081 100x60, 85212 80x50

Ⓐ



MY *Swan II* Werner
4135 110x40

Ⓐ



IG *Caccia inglese* L. Mucke
SO 70790 100x70, 70x50, 50x35, 35x25

Ⓐ



TI *Born to Win* Spartaco Lombardo
46 70x50

Ⓐ



TI *We Sons of the Wind* Spartaco Lombardo
45 70x50

Ⓐ



TI *We Are Champions* Spartaco Lombardo
72 100x50



TI *Sultans of Speed* Spartaco Lombardo
71 100x50



BS *The Horse Dallas* Vladimir Bizon
B6.57.18 50x70

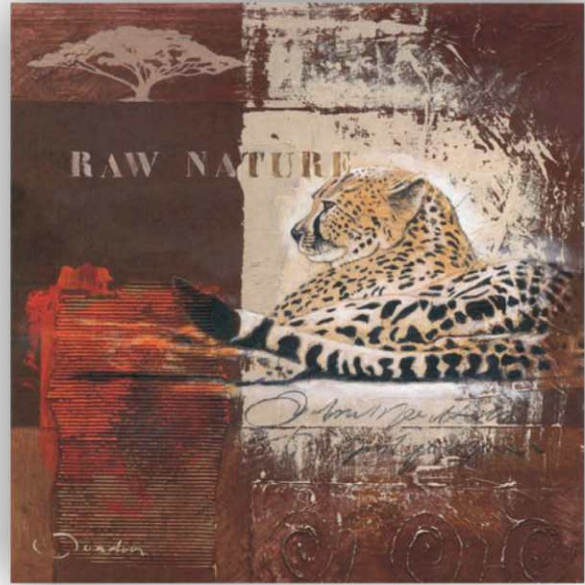


SH BL 1728 100x70, DN 260 70x33

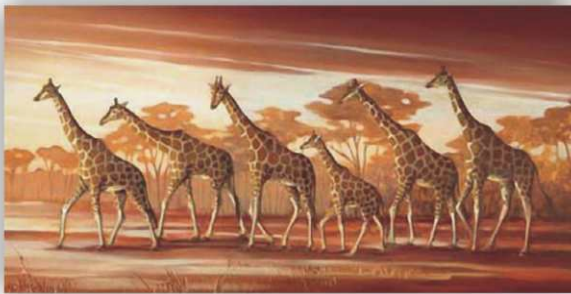




EG Fascinating Nature Jaadoor
JO 4057 70x70, JO 4157 30x30



EG Raw Nature Jaadoor
JO 4058 70x70, JO 4158 30x30



SH XL170 100x50



SH XI169 100x50



EG Horace Liv&Flo
LIF 1011 30x30



EG Clyde Liv&Flo
LIF 1009 30x30



EG Boris Liv&Flo
LIF 1012 30x30





MY *Returning Home* A. Gorjacev
2222 140x90, 89078 80x50, 49153 50x40, 31019 40x30



MY *Pearl of Krym* A. Gorjacev
2221 140x90, 5302 70x33, 89060 80x50, 49128 50x40,
31000 40x30



MY *After long Day* A. Gorjacev
87044 100x60, 89079 80x50, 49154 50x40, 31020 40x30,
99065 30x24, 887044 18x13



MY *Sunset at Jalta* A. Gorjacev
87042 100x60, 89077 80x50, 49152 50x40, 31018 40x30,
99063 30x24, 887042 18x13



MY *Sunset in Siberia* B. Smith
8893 100x50, 89100 80x50, 49240 50x40, 31091 40x30





MY *Evening in Jalta* A. Gorjacev
89061 80x50, 5314 70x33, 49129 50x40, 31001 40x30

A



MY *Yalta Sunset* A. Gorjacev
87173 100x60

A



MY *Panorama of Krym* A. Gorjacev
5313 70x33, 31002 40x30, 99042 30x24, 808890 18x13

A



IG P. Lorenz
SO 70747 70x50

A



IG P. Lorenz
SO 70748 70x50, 50x35, 35x25

A



MY Stormy Weather Helmut Glasl
8500 50x70, 31028 30x40, 808500 13x18

A



MY Full Speed Ahead I Helmut Glasl
49170 50x40

A



MY After long Day Janson
87172 100x60

A



MY A. Gorjacev
87079 100x60

A



EM CB 21 95x33

A



EM CB06 80x60

A



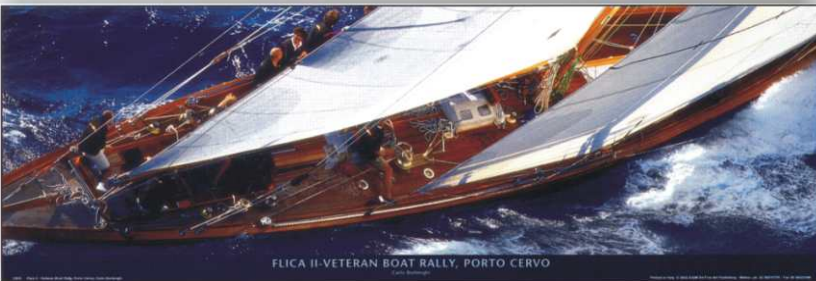
EM CB 37 95x33

A



EM KO06 80x60

A



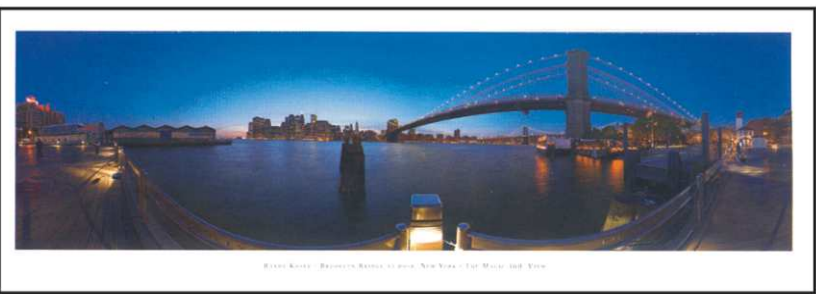
EM CB 33 95x33

A



EM KO02 80x60

A



EM TS 10 95x33

A



EM Cb15 80x60

A



SH PA 3948 100x35

A



MY 5341 70x33

B



MY 5338 70x33

B



MY 5342 70x33

B



MY 5337 70x33

B



MY At Portofino H. Buchner
2522 100x70

A



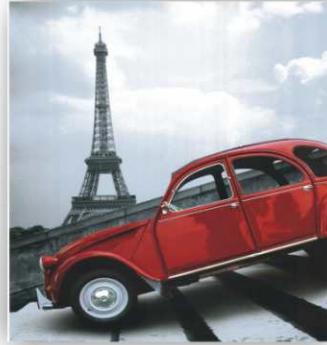
MY Riviera di Levante H. Buchner
2523 100x70

A



MY *A Golden Moment* Zelena
87005 100x60, 89043 80x50, 49097 50x40

A



SH GR 7410 40x50

A



SH GR 7412 50x40

A



SH GR 7409 40x50

A



RS *Flight of Freedom* Roy Cross
SPS 7048 60x40

B



RS *Spitfires Over London* John Young
SPS 7050 50x38

B



SH GR 7411 40x50

A



TA *Times Square I*
Matthew Daniels
MTD 5426 40x80

B



TA *Times Square II*
Matthew Daniels
MTD 5427 40x80

B



TA *Times Square III*
Matthew Daniels
MTD 5428 40x80

B



IG P. Renard
SO 70289 50x70, 35x50, 25x35



IG P. Renard
SO 70287 70x50, 50x35, 35x25



IG P. Renard
SO 70288 70x50, 50x35, 35x25



IG P. Renard
SO 71228 70x50, 50x35, 35x25



IG P. Renard
SO 70286 70x50, 50x35, 35x25



RS Chambertin, 1945
Raymond Campbell
SPK 2057 45x56



RS Vintage Port, 1977
Raymond Campbell
SPK 2058 56x45



RS Vintage Port, 1970
Raymond Campbell
SPK 2099 45x56



RS Malt Whisky Raymond Campbell
SPK 2100 45x56



RS Lifes Pleasures Raymond Campbell
SPS 7062 68x46



RS Bushmills Raymond Campbell
SPK 2228 45x56



RS Jameson Irish Whiskey Raymond Campbell
SPK 2229 45x56



MY Still Life with Fruits II Fasani **A**
62068 70x50



MY Still Life with Fruits I Fasani **A**
62067 70x50



MY Silent Hours II Corrado Pila **A**
4103 110x40, 4300 50x20



MY Still Life with Books Walter Hohenegg **A**
4106 110x40



MY Apples and Grapes Erich Krüger **A**
45030 40x30



MY Still Life and Violin Elisabeth Paetz-Kalich **A**
4533 50x40



SH 305 71x56 **A**



MY Fruit Still Life Erich Krüger **A**
45125 40x30



WL 35165 100x35 **A**



MY My Paradise Walter Hohenegg **A**
6129 50x60



MY *Teatime Popples*
Gertrud Kühnhackl
6124 50x60 **A**



MY *Sentimental Evening I* B. Smith
62134 50x60 **A**



MY *Still Life with Mug*
Corrado Pila
6121 50x60, 3034 30x40 **A**



MY *Yellow Splendour*
Gertrud Kühnhackl
6131 50x60 **A**



MY *Sentimental Evening II* B. Smith
62135 50x60 **A**



MY *Still Life with Plums*
Corrado Pila
6120 50x60, 3033 30x40 **A**



MY *Floral Bouquet II* Heinz Schönhammer
6280 50x60 **A**



MY *Summer Greeting II* Corrado Pila
8377 50x60 **A**



MY Summer Greetings I Heinz Schönhammer **A**
85096 70x50



MY Summer Greetings II Heinz Schönhammer **A**
85097 70x50



MY White Roses Igor Buzin **A**
87068 100x60, 89108 80x50, 5315 70x33



MY Bouquet of Roses Igor Buzin **A**
87069 100x60, 5316 70x33



RS Virginia Jan Sacca **B**
SPK 2671 40x40



RS Rebecca Jan Sacca **B**
SPK 2670 40x40



RS Spring Mist I Carney **B**
X 3005 40x40



RS Spring Mist II Carney **B**
X 3006 40x40



MY *Roses II* Fasani
62047 50x60



MY *Roses I* Fasani
62046 50x60



MY *Festive Bouquet I* Fasani
62120 60x60, 99095 30x30



MY *Roses III* Fasani
5301 70x33



MY *Festive Bouquet I* Fasani
62119 60x60, 99094 30x30



MY *Absolutely Beautiful I* Fasani
85117 70x50, 31063 40x30



PG *Kwiaty* Cezary Różycki
816 100x60, 716 100x50, 901 50x80, 611 50x70, 518 40x50,
405 30x40, 001 24x30, 304 18x24



MY Yellow Roses Igor Levashov
74025 60x80, 31116 30x40

A



MY Orange Roses Igor Levashov
74026 60x80

A



MY White Roses III Igor Levashov
74020 80x60, 31111 40x30

A



MY Champagne Roses Igor Levashov
74021 80x60, 31112 40x30

A



MY Pink Roses Igor Levashov
74022 80x60, 31113 40x30

A



MY True Romance Igor Levashov
74023 80x60, 31114 40x30

A



MY Bouquet of White Roses Igor Levashov
2223 120x90



MY Pink Roses Igor Levashov
2224 120x90



MY Always Dreaming of ... Igor Levashov
85180 70x50



MY Virgin Rose Igor Levashov
85183 50x70



MY Ornamental Roses I
Igor Levashov
85181 50x70



MY Ornamental Roses II
Igor Levashov
85182 50x70





MY Weidenzweige I Karin Van der Valk 
6236 50x70, 3136 30x40



MY Weidenzweige II Karin Van der Valk 
6237 50x70, 3137 30x40



MY Weidenzweige mit Roten Blumen 
Karin Van der Valk
6254 50x70



MY Weidenzweige mit Blauen Blumen 
Karin Van der Valk
6255 50x70, 3185 30x40



MY Slender Twigs I 
Alice Wonder
63028 30x70



MY Slender Twigs II 
Alice Wonder
63029 30x70



MY Slender Twigs III 
Alice Wonder
63030 30x70



MY Slender Twigs IV 
Alice Wonder
63031 30x70



TA *White Dahlia I* Caroline Kelly
CKL 5018 50x50 E



TA *White Dahlia II* Caroline Kelly
CKL 5019 50x50 E



MY *Eternity I*
49251 50x50 A



MY *Eternity II*
49252 50x50 A



MY *Seline I* Verbeek & Van Den Broek
62121 60x60 A



MY *Seline II* Verbeek & Van Den Broek
62122 60x60 A



MY Still life with Pears
Vjaceslav Babicev
49257 50x50

A



MY Still life with Pears
Vjaceslav Babicev
49258 50x50

A



MY Still life with Pears
Vjaceslav Babicev
49259 50x50

A



MY Still life with Pears
Vjaceslav Babicev
49260 50x50

A



MY Still life with Pears
Vjaceslav Babicev
49261 50x50

A



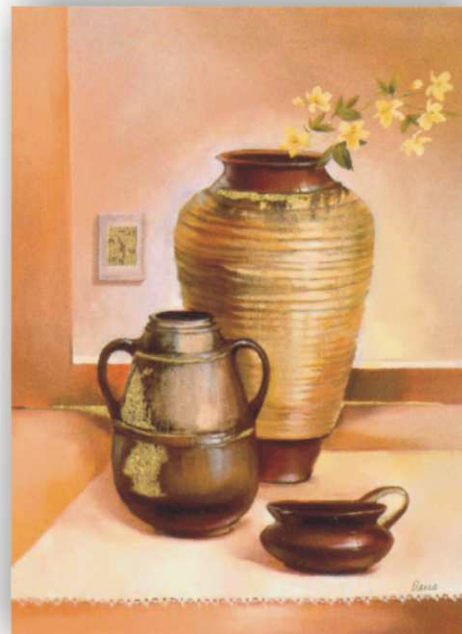
MY Still life with Pears
Vjaceslav Babicev
49262 50x50

A



MY Bari Olga
85163 50x70

A



MY Trieste Olga
85164 50x70

A



SH ZY 6924 69x69, WL 3494 33x33

A



SH WL 3493 33x33

A



SH ZY 6926 69x69

A



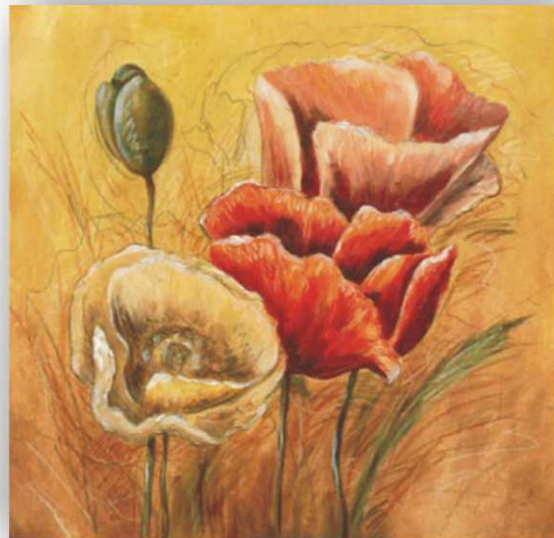
SH ZY 6927 69x69

A



SH ZY 6925 69x69

A



SH ZY 6929 69x69

A



MY *Whispering Bamboo IV* Franz Heigl 85104 50x70 **B**



MY *Whispering Bamboo I* Franz Heigl 85101 50x70 **B**



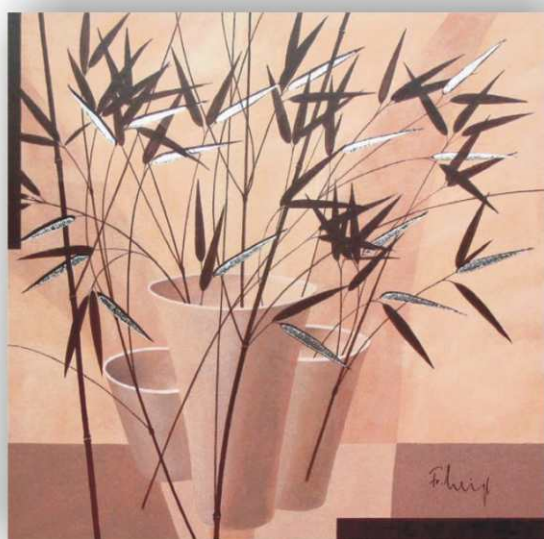
MY *Whispering Bamboo II* Franz Heigl 85102 50x70 **B**



MY *Whispering Bamboo III* Franz Heigl 85103 50x70 **B**



EG *Portofino* Claudia Ancillotti CA 2149 50x40 **A**



MY *Swinging Bamboo I* Franz Heigl 62132 60x60 **B**



MY *Swinging Bamboo II* Franz Heigl 62133 60x60 **B**



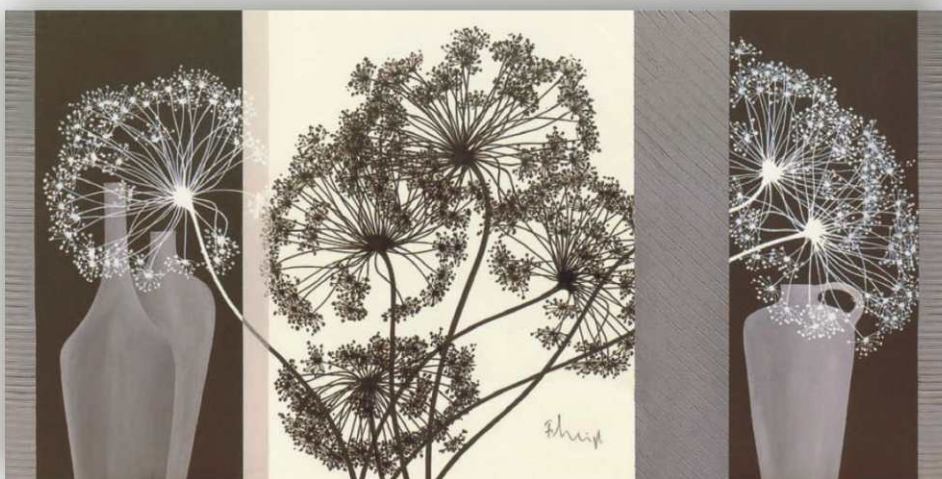
TA *Panneau Neoclassique II* Helene Simon
HES 5965 60x80



TA *Panneau Neoclassique I* Helene Simon
HES 5964 60x80



TA *Fleurs Neoclassiques I* Helene Simon
HES 5962 100x50



MY *Delicate Twigs* Franz Heigl
2816 100x50



SH DG 337034 70x33

A



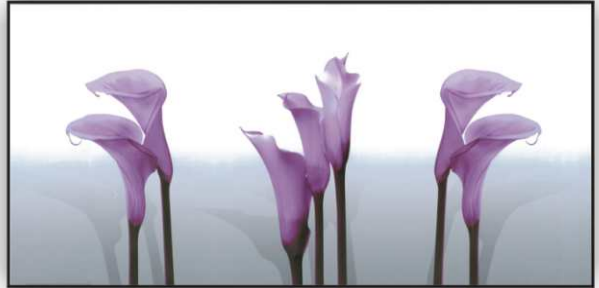
SH 337033 70x33

A



SH DG 337032 70x33

A



SH DG 337030 70x33

A



SH XL 220 100x50

A



SH XL 208 100x50

A



SH DG 337013 70x33

A



SH DG 337014 70x33

A



MY *A Bunch of Poppies* Erich Krüger
8511 70x50

A



SH *DG 337028* 33x70

A



MY *Classic Rose Bowl* Erich Krüger
5300 70x33

A



SH *DG 337029* 33x70

A



WL 60888 100x60

A



SH DG 337011 70x33

A



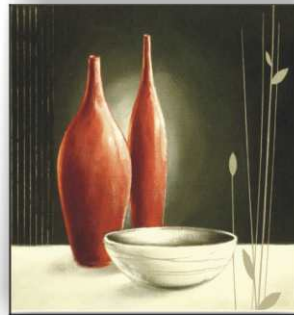
SH PA 3946 100x35

A



EG YB 1075 50x70

B



EG YB 1076 50x70

B



MY Sally Scaffardi
62168 60x60

B



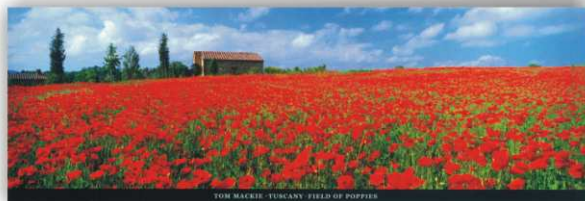
MY 2820 100x50

A



MY Sally Scaffardi
62167 60x60

B



EM TM 02 95x33

A



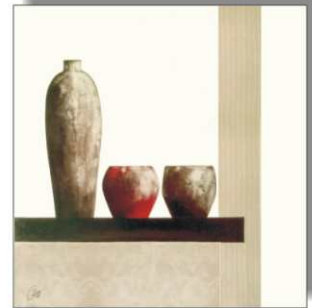
EM PF 05 95x33

A



EM LP 46 95x33

A



EG GR 1004 70x70

A



MY Opulent Bloom
Verbeek & van den Broek
G2 85235 70x50

B



MY Indulgent Springs
Verbeek & van den Broek
G2 85236 70x50

B



EG GR 1007 70x70

A



EG Lime Lily on Chocolate
Isabel Price
IP 1003 50x50

A



EG Chocolate Lily on Lime
Isabel Price
IP 1004 50x50

A



EG JO 4051 70x70

A



EG CW 2050 80x60

A



MY 62172 60x60, 99221 30x30

B



MY 62171 60x60, 99220 30x30

B



SJ Siegfried Schoregge
SO 7004 35x70

A



SJ Siegfried Schoregge
SO 7003 35x70

A



SJ Siegfried Schoregge
SO 7002 35x70

A



SJ Siegfried Schoregge
SO 7001 35x70

A



EG KK 1040 70x70 A



EG KK 1039 70x70 A



EG KK1041 70x70 A



EG RIW 1048 70x70 A



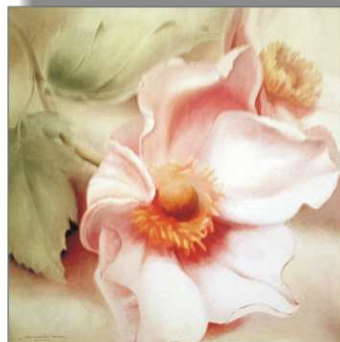
EG APJ 1040 70x70 A



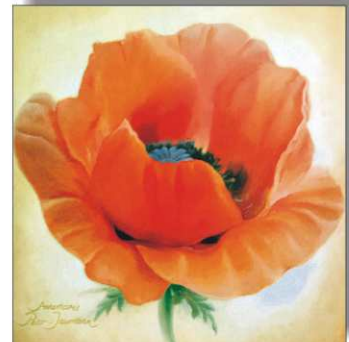
EG APJ 1033 70x70 A



EG RIW 1047 70x70 A



EG APJ 1039 70x70 A



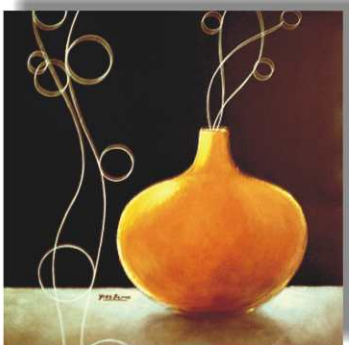
EG APJ 1032 70x70 A



EG CW 1043 70x70 A



EG CW 1042 70x70 A



EG YB 1073 70x70 A



EG

GR 1001
100x50

A



EG

GR 1002
100x50

A



MY

87199
100x50

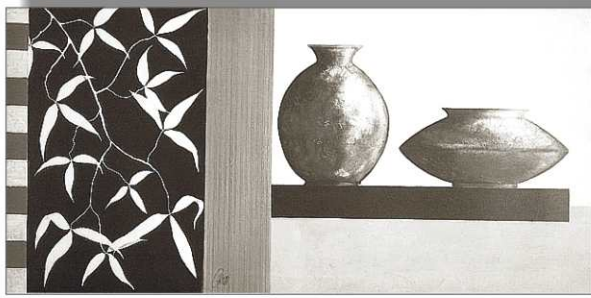
B



MY

87200
100x50

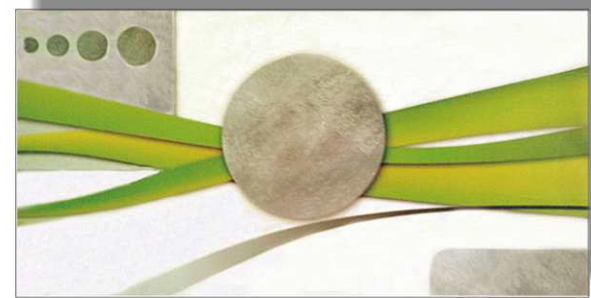
B



EG

GR 1009
100x50

A



EG

KKO 1085
100x50

A



EG

KK 2026
50x70

A



EG

KK 2025
50x70

A



EG

RL 1068
50x70

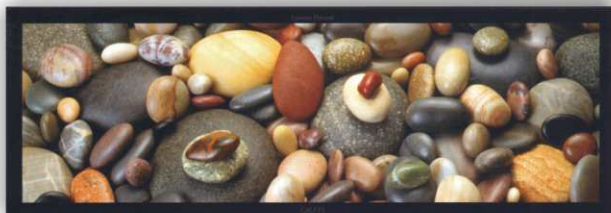
A



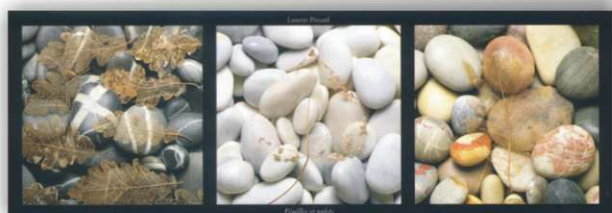
EM LP 69 95x33



EM LP 66 95x33



EM LP 65 95x33



EM LP 68 95x33



SH PA 3931 100x35



SH GR 7369 40x50



SH PA 3935 100x35



SH GR 7370 50x40



EG RL 1067
70x50



TA Grantourismo Francis Brook
FBR 5382 80x30





RS Cuban Classics IV Tony Koukos
STP/8463 70x50

Ⓔ



RS Cuban Classics III Tony Koukos
SPT/8462 70x50

Ⓔ



RS Havana II Tony Koukos
SPT/8460 50x70

Ⓔ



RS Havana III Tony Koukos
SPT/8461 50x70

Ⓔ



RS Havana X Tony Koukos
SPL/4141 30x30

Ⓔ

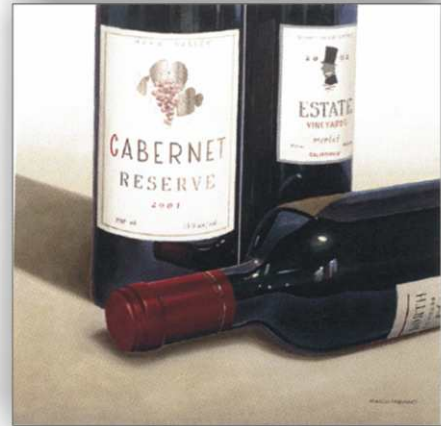


RS Havana XI Tony Koukos
SPL/4140 30x30

Ⓔ



AM Wine Tasting Evening
 Marco Fabiano
 A6068 50x50 E



AM Vintner's Selection
 Marco Fabiano
 A6066 50x50 E



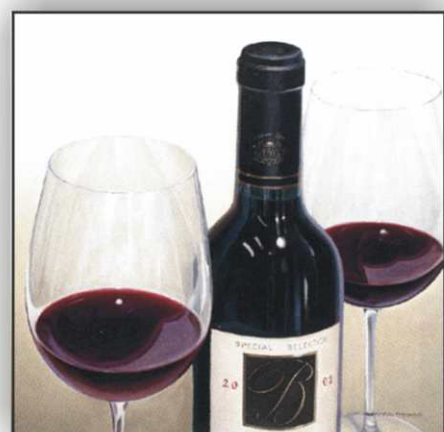
RS The Vintage Collection
 Battle of Britain
 SPL/4091 30x40 E



RS The Vintage Collection
 The Seven Year Itch
 SPL/4092 30x40 E



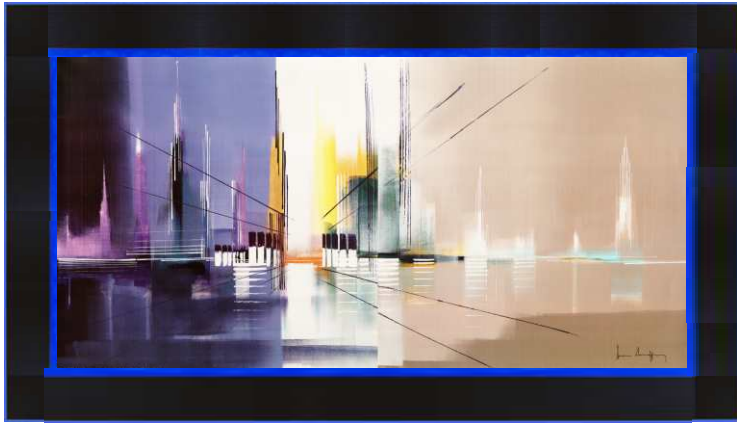
AM Cellar Selection
 Marco Fabiano
 A6067 50x50 E



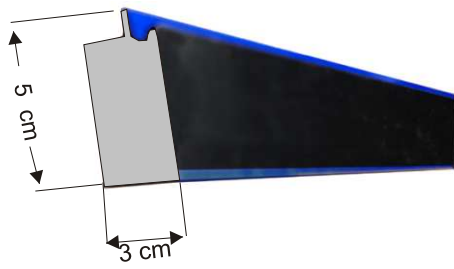
AM Sommelier's Choice
 Marco Fabiano
 A6065 50x50 E

WZORY RAM

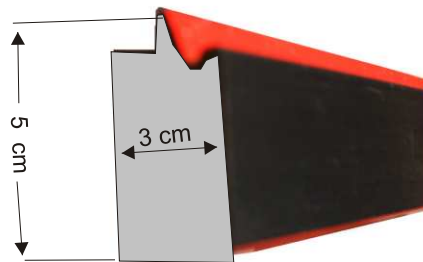
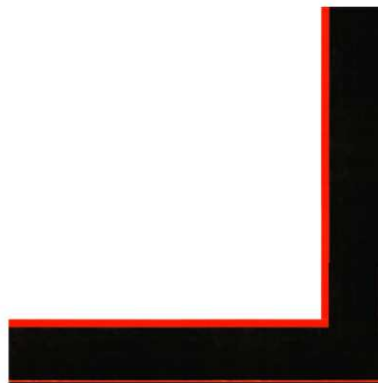


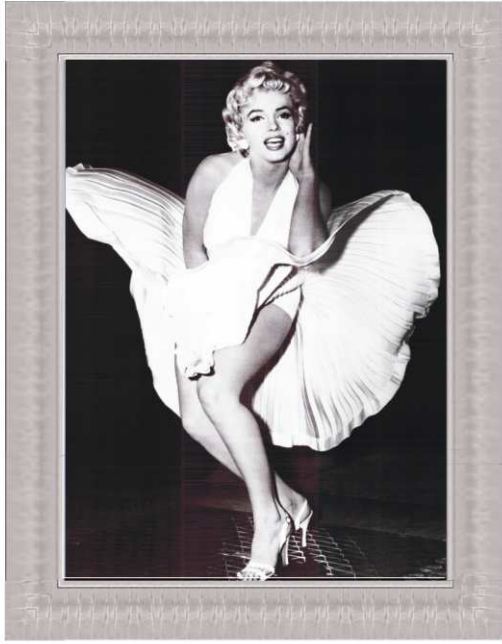


T-411

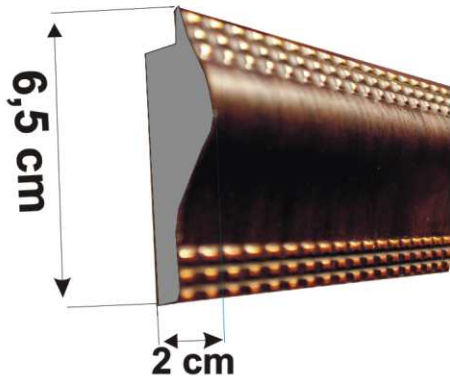
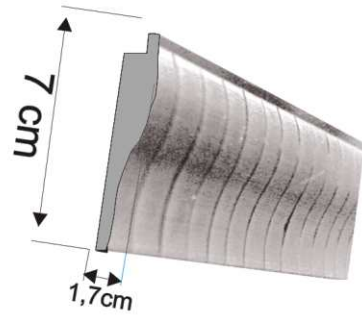


T-410





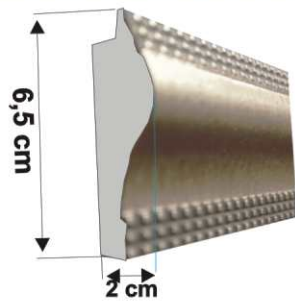
T3-309



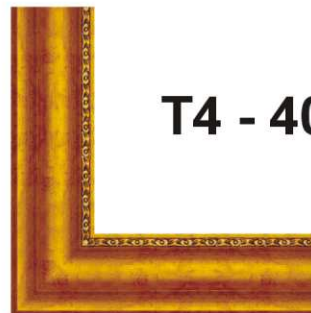
T3-311

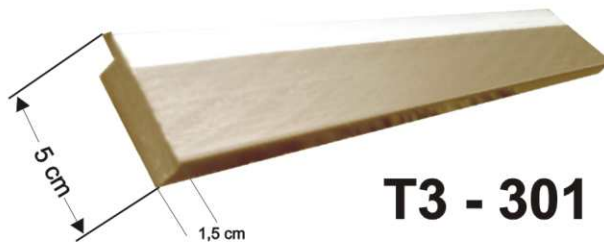


T3-310

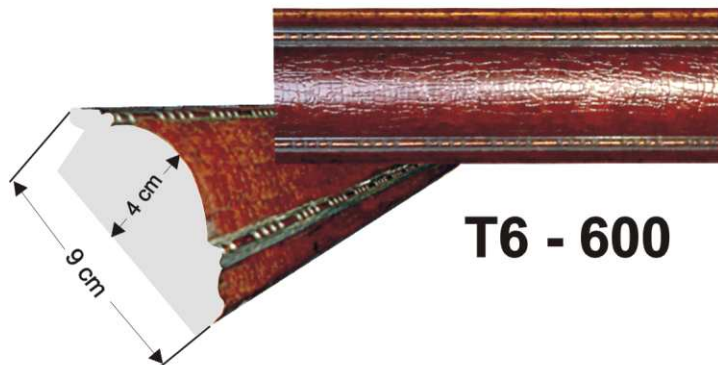


T4 - 402





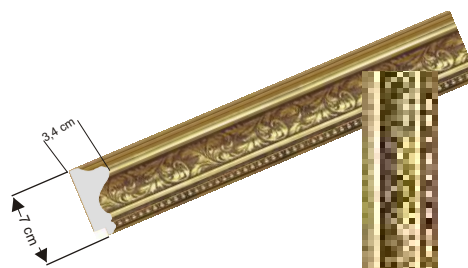
T3 - 301



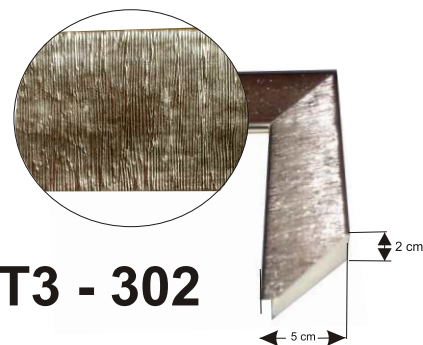
T6 - 600

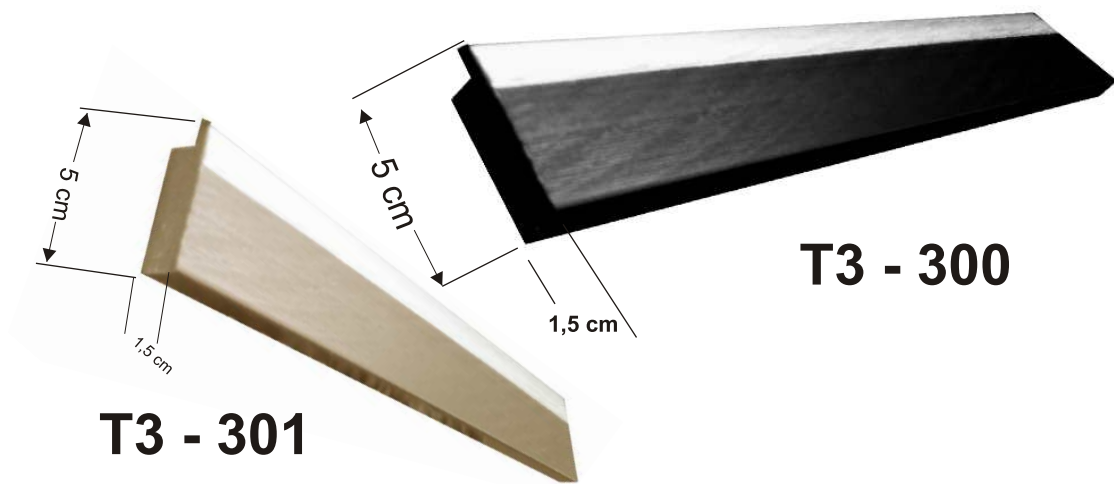


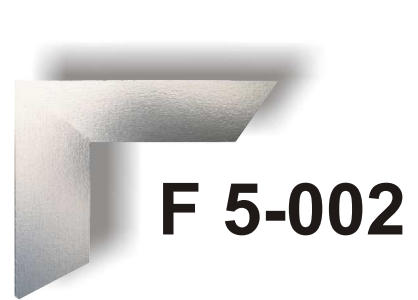
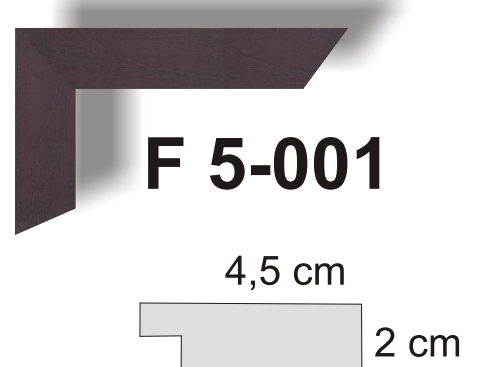
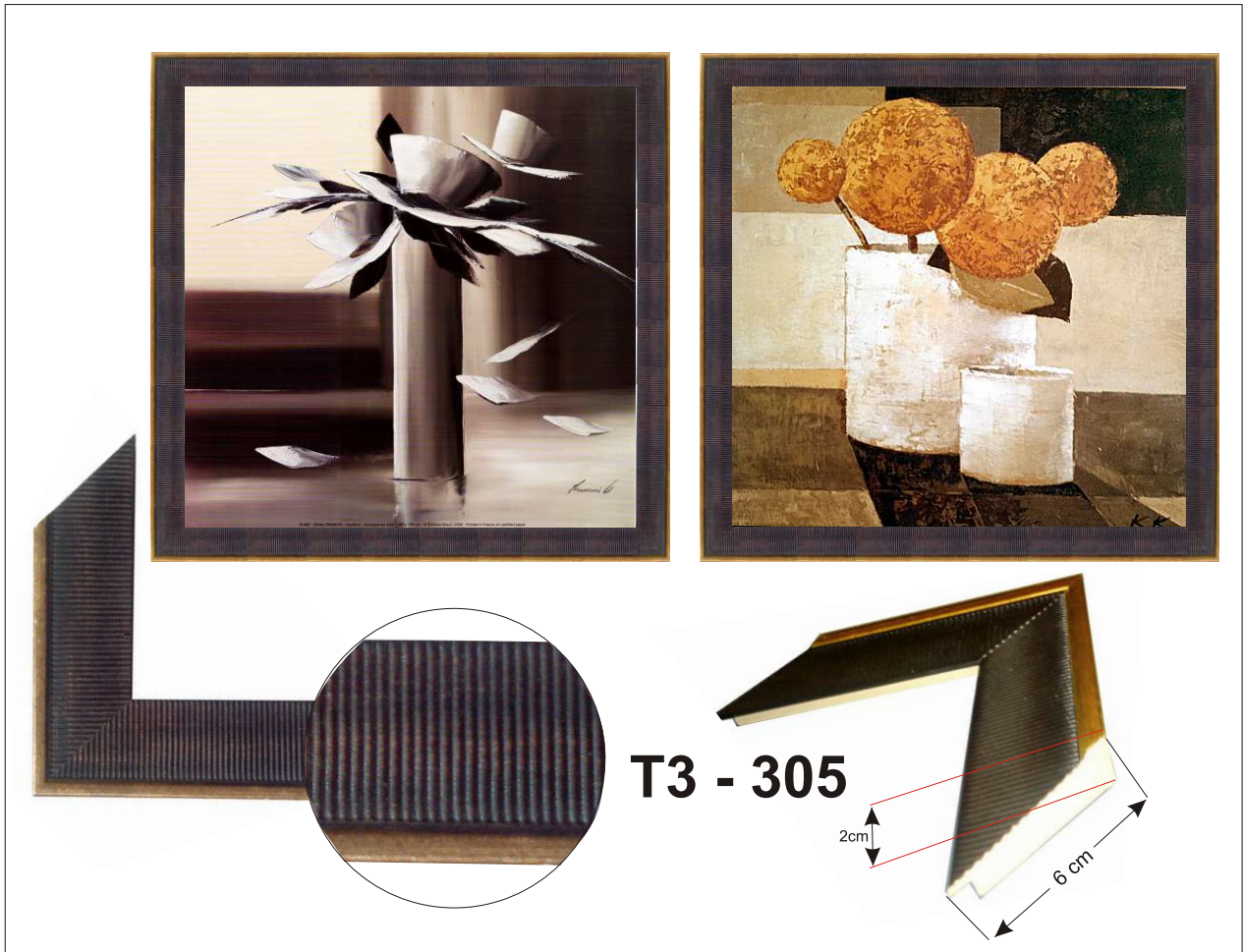
T4 - 409



T3 - 302









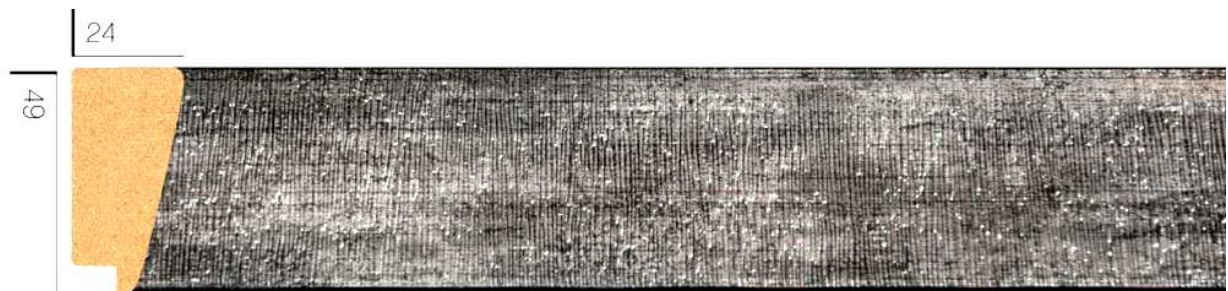
oprawa typu BOX



T3 - 300



T3 - 301



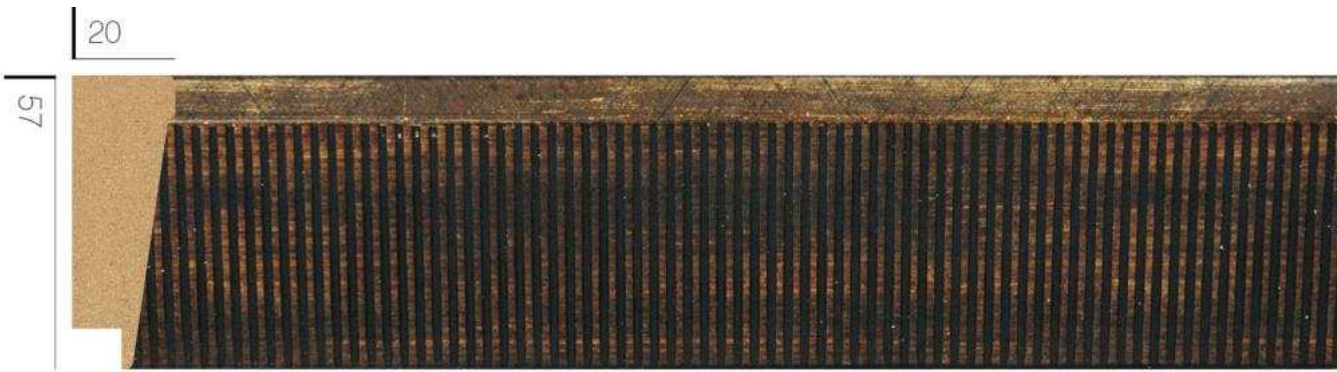
T3 - 302



T3 - 303



T3 - 304



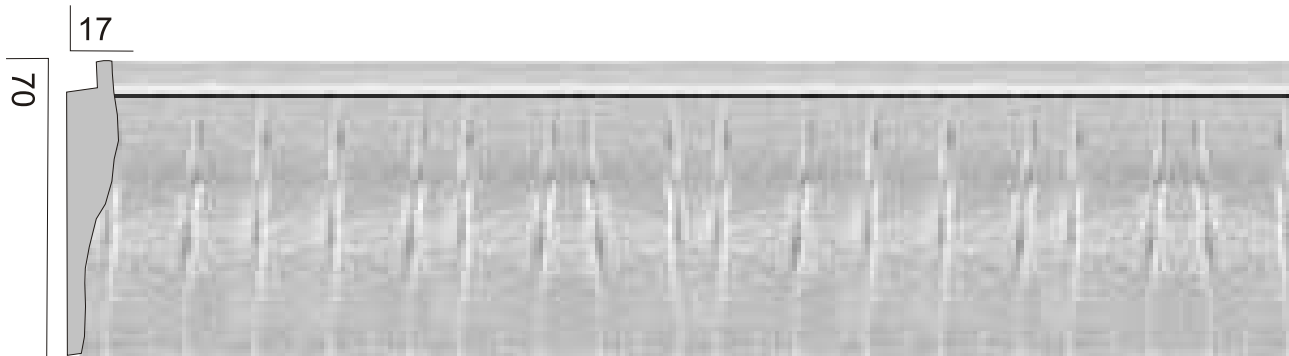
T3 - 305



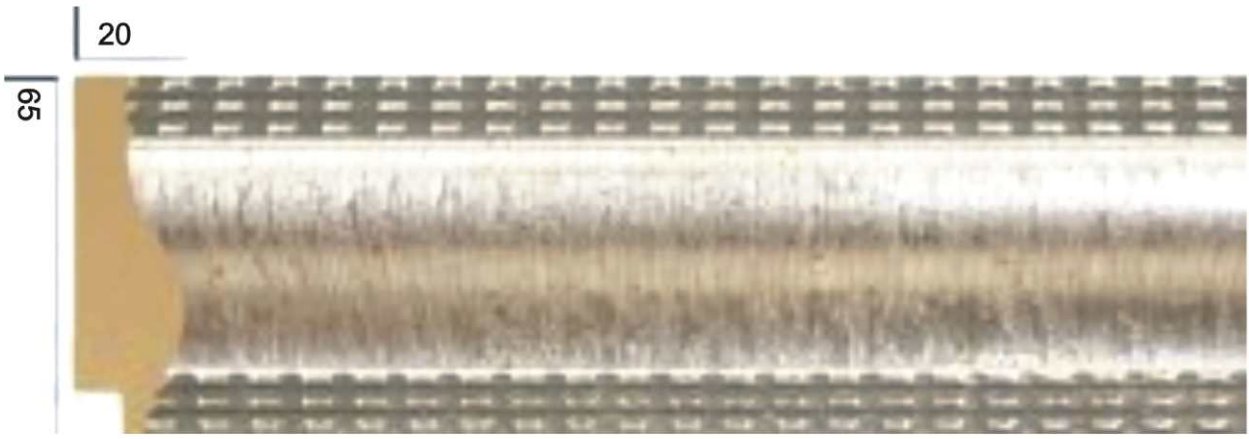
T3 - 307



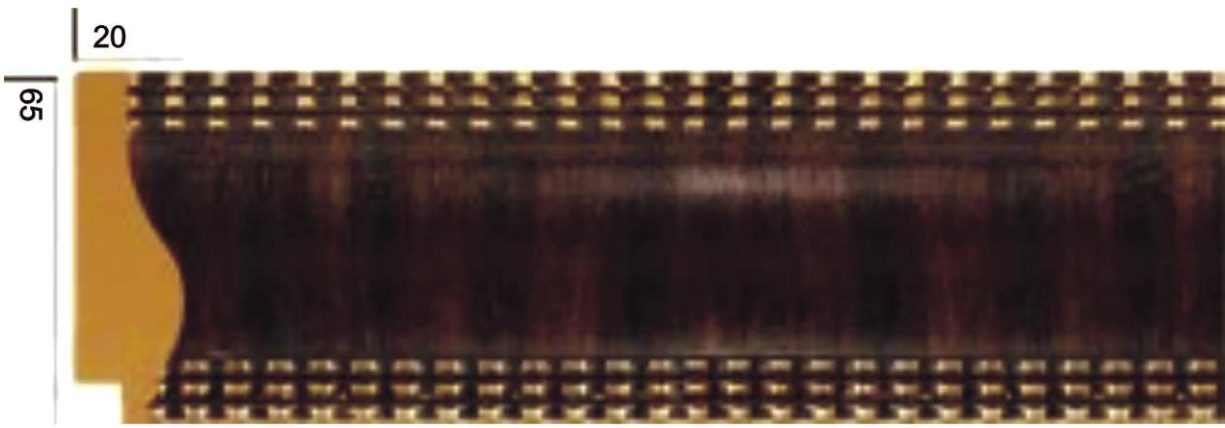
T3 - 308



T3 - 309



T3 - 310



T3 - 311



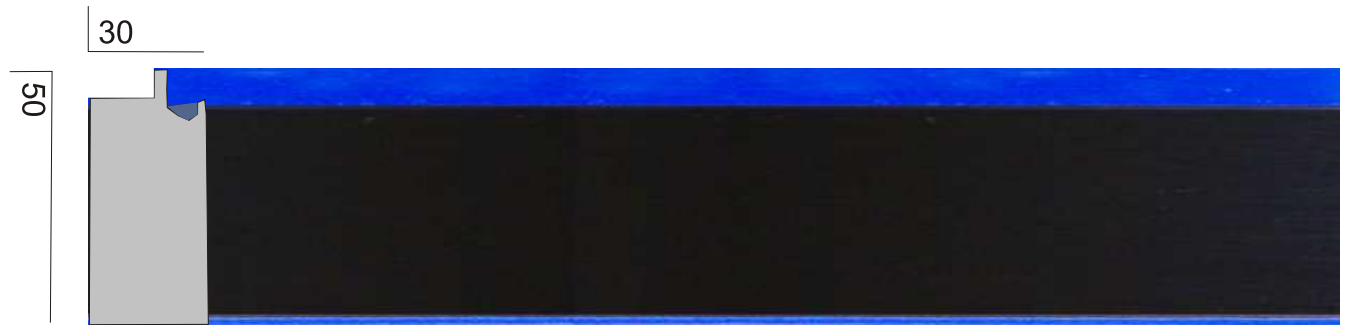
T4 - 402



T4 - 409



T4 - 410



T4 - 411



T6 - 600